

ELECTROMARKERINGEN / MARQUAGE ELECTRICITE

1500/1700



PP	VIN.
200x100	1721.01 1731.01
350x200	1722.01 1732.01



PP	VIN.
200x100	1721.V2 1731.03
350x200	1722.02 1732.02



PP	VIN.
100x50	1531.46
350x200	1722.L8 1732.L8



PP	VIN.
200x100	1722.59
350x200	1723.59



PP	VIN.
200x100	1722.A1
350x200	1723.A1



PP	VIN.
200x100	1721.00G 1731.00G



PP	VIN.	MAGN. 0.6mm
100x80		1700.03
200x100	1721.03 1731.03	1701.03
350x200	1722.03 1732.03	



PP	VIN.
200x100	1721.H1 1731.H1



PP	VIN.
200x100	1721.A2 1731.A2
350x200	1722.A2 1732.A2



VILTSTIFT droog uitwisbaar
MARQUEUR effaçage à sec

ZWART / NOIR
REF.: MARKERZ



PP	VIN.
200x100	1721.04 1731.04
350x200	1722.04 1732.04



PP	VIN.
350x200	1722.06 1732.06



PP	VIN.	MAGN. 0.6mm
350x200	1722.L9 1732.L9	1702.L9



PP	VIN.	MAGN. 0.6mm
200x100	1721.02 1731.02	1701.02



PP	VIN.
200x100	1721.05 1731.05
350x200	1722.05



PP	VIN.
200x100	1721.H4 1731.H4

Spanningsaanduidingen / Indications de tension

220 VOLT

60x15mm	VIN.
TEKST / TEXTE	Nr./N°
12 VOLT	1530.39
24 VOLT	1530.01
110 VOLT	1530.03
220 VOLT	1530.05
230 VOLT	1530.32
380 VOLT	1530.07
400 VOLT	1530.33
400 V+N	1530.08
440 VOLT	1530.18
3x230 VOLT	1530.50
3x400 VOLT	1530.34

400 VOLT

100x50mm	VIN.
TEKST / TEXTE	Nr./N°
12 VOLT	1531.86
24 VOLT	1531.01
48 VOLT	1531.02
48 V DC	1531.29
110 VOLT	1531.03
130 VOLT	1531.04
220 VOLT	1531.05
230 VOLT	1531.32
240 VOLT	1531.27
380 VOLT	1531.07
400 VOLT	1531.33
440 VOLT	1531.18
600 VOLT	1531.10
3000 VOLT	1531.11
4500 VOLT	1531.19
4950 VOLT	1531.23
6000 VOLT	1531.17
6200 VOLT	1531.12
6300 VOLT	1531.87
10000 VOLT	1531.13
10500 VOLT	1531.A0
11000 VOLT	1531.20
11500 VOLT	1531.A1
12000 VOLT	1531.14
15000 VOLT	1531.15
36000 VOLT	1531.16
DANGER!	1531.47

GEVAAR! ELEKTRISCHE SPANNING

100x50mm	VIN.	UV-Line
TEKST / TEXTE	Nr./N°	Nr./N°
3x220 VOLT	1531.06	
3x230 VOLT	1531.50	
3x230 V+PEN	1531.85	
3x380 VOLT	1531.08	
230/400V	1531.36	15U1.36
3x380 V+N	1531.37	
3x380/220V	1531.28	
3x400 VOLT	1531.34	
3x400 V+N	1531.35	
3x400 V+PEN	1531.84	
3x415 VOLT	1531.38	
3x500 VOLT	1531.24	
2x220 VOLT	1531.60	
OPEN	1531.40	
OPEN/OUVERT	1531.43	
TOE	1531.41	
FERME	1531.45	
GESLOTEN/FERME	1531.42	
GEVAAR	1531.83	
ONDER SPANNING	1531.30	
HOOGSPANNING	1531.31	
HOOGSPANNING 15000 VOLT	1531.25	
GEVAAR ELECTRICISCHE SPANNING	1531.51	
DANGER TENSION ELECTRIQUE		

3X380 VOLT

250x100mm	VIN.
TEKST / TEXTE	Nr./N°
220 VOLT	1532.05
230 VOLT	1532.32
380 VOLT	1532.07
400 VOLT	1532.33
6300 VOLT	1532.87
10000 VOLT	1532.13
11000 VOLT	1532.20
15000 VOLT	1532.15
3x220 VOLT	1532.06
3x380 VOLT	1532.08
3x380/220 VOLT	1532.28
3x380 V+N	1532.37

DANGER!

100x20mm	VIN.
TEKST / TEXTE	Nr./N°
GEVAAR!	1530.83
DANGER!	1530.86



VIN.	
25x50	1531.99
75x150	1532.99

WAARSCHUWINGSBORDEN / SIGNAUX DE DANGER

3500



	PP	VIN.	ALU Anod. 1,5mm	Retrorefl.	UV-line
25mm		353C.01			
50mm		3530.01			35U0.01
90mm	3521.01	3531.01		35R1.01	35U1.01
□ 125mm			351B.01		
150mm	352A.01	353A.01		35RA.01	
□ 150mm			351A.01		
200mm	3522.01	3532.01		35R2.01	35U2.01
□ 200mm			3512.01		
300mm	3523.01	3533.01			
400mm	3524.01	3534.01			
□ 500mm	3525.01	3535.01			



	PP
300mm	3523.C9



	PP	VIN.	Retrorefl.
50mm		3530.32	
90mm	3521.32	3531.32	35R1.32
200mm	3522.32	3532.32	35R2.32
300mm	3523.32	3533.32	



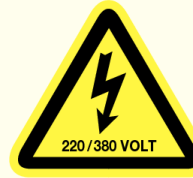
	PP	VIN.
90mm	3521.62	3531.62
200mm	3522.62	3532.62
300mm	3523.62	3533.62



	PP	VIN.
90mm		3531.69
200mm	3522.69	3532.69
400mm		3534.69



	PP	VIN.
50mm		3530.96
90mm	3521.96	3531.96
200mm	3522.96	3532.96



	PP	VIN.
50mm		3530.33
90mm	3521.33	3531.33
200mm	3522.33	3532.33
300mm	3523.33	3533.33



	VIN.
90mm	3531.C1



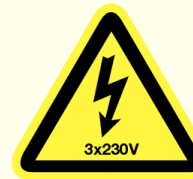
	PP	VIN.
50mm		3530.68
90mm	3521.68	3531.68
200mm	3522.68	3532.68



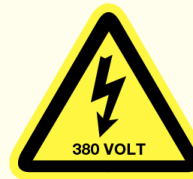
	PP	VIN.
50mm		3530.58
90mm	3521.58	3531.58
200mm	3522.58	3532.58



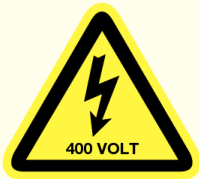
	VIN.
90mm	3531.C5



	VIN.
90mm	3531.C3



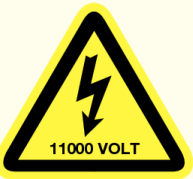
	PP	VIN.
90mm	3521.C0	3531.C0



	PP	VIN.
50mm		3530.80
90mm		3531.80
200mm	3522.80	3532.80



	PP	VIN.
50mm		3530.71
90mm	3521.71	3531.71
200mm		3532.71



	VIN.
90mm	3531.C8



	VIN.
50mm	3530.B9
90mm	3531.B9



	VIN.
50mm	3530.98
90mm	3531.98



	PP	VIN.
50mm		3530.20
90mm	3521.20	3531.20
200mm	3522.20	3532.20
300mm	3523.20	3533.20
400mm	3524.20	3534.20



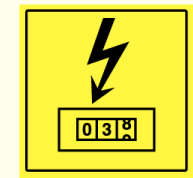
	PP
90mm	3521.97



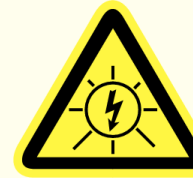
	VIN.
90mm	3531.90



	VIN.
50mm	3530.E4
90mm	3531.E4



	PP	VIN.
150x150	3522.67	3532.67



	VIN.
90mm	3531.E8
150mm	353A.E8

ELECTROKUTIE (voor België) ELECTROCUTION (pour la Belgique)

3800

EERSTE HULP BIJ ELEKTROKUTIE

WAARSCHUWING: Het is gevaarlijk om iemand te helpen die is getroffen door elektriciteit. Het is belangrijk om eerst de stroom te stoppen voordat u de persoon aanraakt.

1. **ONMAGTIG** 1.a. **ONMAGTIG** 1.b. **ONMAGTIG**

2. **BEWUSTLOOS** 2.a. **BEWUSTLOOS** 2.b. **BEWUSTLOOS**

3. **BEWUST** 3.a. **BEWUST** 3.b. **BEWUST**

PREMIERS SOINS A DONNER EN CAS D'ELECTROCUTION

ATTENTION: Il est dangereux de tenter de secourir une personne électrocutée. Il est important d'arrêter le courant avant de toucher la personne.

1. **INCONSCIENT** 1.a. **INCONSCIENT** 1.b. **INCONSCIENT**

2. **INCONSCIENT** 2.a. **INCONSCIENT** 2.b. **INCONSCIENT**

3. **CONSCIENT** 3.a. **CONSCIENT** 3.b. **CONSCIENT**

FIRST AID BY ELECTROCUTION

1. **UNCONSCIOUS** 1.a. **UNCONSCIOUS** 1.b. **UNCONSCIOUS**

2. **UNCONSCIOUS** 2.a. **UNCONSCIOUS** 2.b. **UNCONSCIOUS**

3. **CONSCIOUS** 3.a. **CONSCIOUS** 3.b. **CONSCIOUS**

SOINS AUX ELECTRISÉS 1^{ère} HELP BIJ ELEKTROKUTIE

WAARSCHUWING: Het is gevaarlijk om iemand te helpen die is getroffen door elektriciteit. Het is belangrijk om eerst de stroom te stoppen voordat u de persoon aanraakt.

1. **ALARMEREN** 1.a. **ALARMEREN** 1.b. **ALARMEREN**

2. **ALARMEREN** 2.a. **ALARMEREN** 2.b. **ALARMEREN**

3. **ALARMEREN** 3.a. **ALARMEREN** 3.b. **ALARMEREN**

	PP
210x297 A4	3823.05
297x420 A3	3824.05

	PP
210x297 A4	3823.06
297x420 A3	3824.06

	PP
210x297 A4	3823.09

	PP
210x297 A4	3823.19